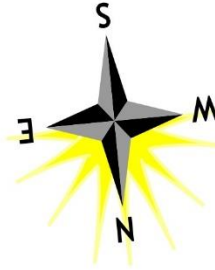


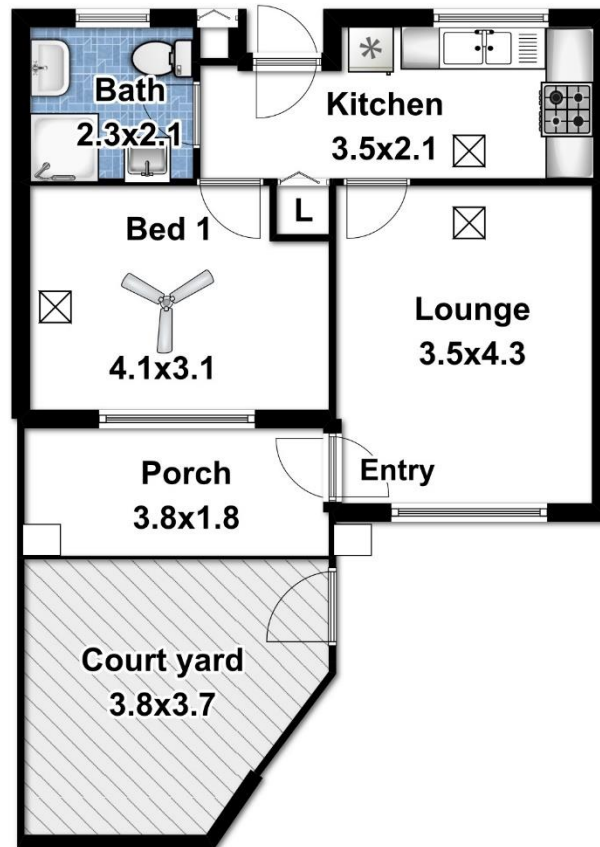
UNIT 31, ELIMATTA VILLAGE,

30 TOD STREET, GAWLER

Area	Sqm
Living	46
C/Yard	14.1
Porch	6.8
Shed	3
Total	69.9



Shed
2.0x1.5



This sketch is for illustration purposes only.
All measurements are metric, being internal,
not to scale, and approximate.

Produced by propertylaneimages.com.au